

HEGAWA

FLANGED, RESTRAINED DISMANTELING JOINTS

Application

The Hegawa Flanged restrained dismantling joints are double flanged fittings that allow longitudinal adjustment in flanged pipe systems. They have been developed to provide greater flexibility at the planning and installation stages of flanged pipe systems and also for subsequent maintenance.

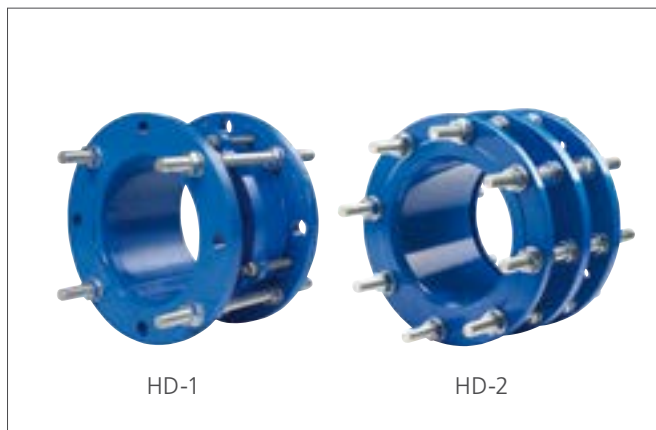
Technical concept

The Hegawa Flanged restrained dismantling joints are particularly suitable for simplifying the installation and removal of all kind of valves, pumps and flanged pipes and fittings. Typical applications include pumping stations, water treatment works, sewage treatment works, plant rooms, meter chambers, power generation equipment and gas distribution stations.

Available from DN 50 mm up to including DN 1600 mm.

Flanges can be drilled to suit various international standards like ISO, DIN, BS and ANSI for pressure classes PN 10, PN 16, PN 25 and PN 40.

If you have any technical questions that are not answered in this brochure, please do not hesitate to contact Hegawa or your Hegawa distributor.



Material specifications

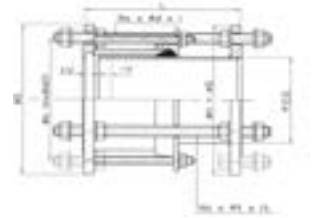
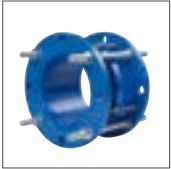
- Material: High quality rolled steel to BS4360:1986 Grade 43A.
- Coating: Fusion bonded epoxy coating, thickness approx. 200 microns. Other coatings such as hot dipped galvanized, transit coating or other epoxy coatings are available on request.
- Rubber gaskets: EPDM or NBR.
- Tie bars and nuts: Made of steel BS970:Part1:1983 Grade 070 and are hot dip galvanized to BS729. Stainless steel tie bars and nuts are available on request.

Advantages

- Accommodates up to 50 mm / 2" longitudinal adjustment.
- Allows for fast and simple maintenance of valves and pumps.
- Simplifies future pipework modifications and reduces down time.
- Installed with a spanner and a torque wrench, no special tools needed.
- Absorbs vibrations.
- Accepts some disalignment in straight pipes.

HEGAWA

DISMANTELING JOINTS TYPE HD-1

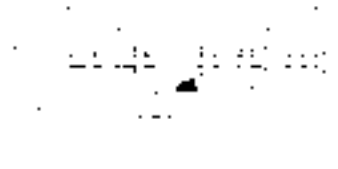


Flanged, restrained dismanteling joints type HD-1

Nominal diameter mm	PN	Overall length in medium position mm	Tolerance +/- V mm	Flange specification				Size Tie bars Mt x Lt	Number of tie bars	Weight each kg
				Flange o.d \varnothing D mm	Pitch Circle \varnothing K mm	Number of bolt holes n x \varnothing d2				
50	10, 16	180	20	165	125	4x18	M16x280	2	8,0	
65	10, 16	180	20	185	145	4x18	M16x280	2	9,5	
80	10, 16	200	20	200	160	8x18	M16x310	4	12,5	
100	10, 16	200	20	220	180	8x18	M16x310	4	14,5	
125	10, 16	200	20	250	210	8x18	M16x310	4	18,0	
150	10, 16	200	20	285	240	8x22	M20x340	4	21,5	
200	10	220	25	340	295	8x22	M20x340	4	29,0	
	16	220	25	340	295	12x22	M20x340	6	31,5	
250	10	220	25	395	350	12x22	M20x360	6	42,0	
	16	230	25	405	355	12x26	M20x370	6	45,5	
300	10	220	25	445	400	12x22	M20x360	6	47,5	
	16	250	25	460	410	12x26	M24x410	6	54,0	
350	10	230	25	505	460	16x22	M20x360	8	66,0	
	16	260	25	520	470	16x26	M24x410	8	80,0	
400	10	230	25	565	515	16x26	M24x370	8	79,0	
	16	270	25	580	525	16x30	M27x430	8	97,5	
450	10	250	25	615	565	20x26	M24x390	10	92,5	
	16	270	25	640	585	20x30	M27x430	10	114,0	
500	10	260	25	670	620	20x26	M24x390	10	105,0	
	16	280	25	715	650	20x33	M30x460	10	147,5	
600	10	260	25	780	725	20x30	M27x410	10	130,0	
	16	300	25	840	770	20x36	M33x480	10	196,5	
700	10	260	25	895	840	24x30	M27x410	12	165,5	
	16	300	25	910	840	24x36	M33x480	12	211,0	
800	10	290	25	1015	950	24x33	M30x460	12	229,0	
	16	320	25	1025	950	24x39	M36x525	12	280,0	
900	10	290	25	1115	1050	28x33	M30x460	14	261,0	
	16	320	25	1125	1050	28x39	M36x525	14	323,0	
1000	10	290	25	1230	1160	28x36	M33x480	14	307,0	
	16	325	25	1255	1170	28x42	M39x550	14	407,0	
1100	10	300	25	1340	1270	32x36	M33x480	16	351,0	
	16	325	25	1355	1270	32x42	M39x550	16	448,5	
1200	10	320	25	1455	1380	32x39	M36x525	16	430,5	
	16	325	25	1485	1390	32x48	M45x575	16	587,5	

HEGAWA

DISMANTELING JOINTS TYPE HD-2



Flanged, restrained dismanteling joints type HD-2

Pipe/flange Nom. Bore	PN	Max L	Tol. L	D	K	Bolts		Studs	
						No.	Hole	Size (d)	Lenght (a)
50	10, 16, 25	200	+/- 25	165	125	4	18	16	310
80	10, 16, 25	200	+/- 25	200	160	8	18	16	310
100	10, 16, 25	220	+/- 25	220	180	8	18	16	340
150	10, 16	220	+/- 25	285	240	8	22	20	340
	25	230	+/- 25	300	250	8	26	24	370
200	10	250	+/- 25	340	295	8	22	20	410
	16	250	+/- 25	340	295	12	22	20	410
	25	250	+/- 25	360	310	12	26	24	410
250	10	250	+/- 25	395	350	12	22	20	410
	16	250	+/- 25	405	355	12	26	24	410
	25	250	+/- 25	425	370	12	30	27	410
300	10	250	+/- 25	445	400	12	22	20	410
	16	250	+/- 25	460	410	12	26	24	410
	25	250	+/- 25	485	430	16	30	27	410
350	10	260	+/- 25	505	460	16	22	20	410
	16	260	+/- 25	520	470	16	26	24	410
	25	300	+/- 25	555	490	16	33	30	460
400	10	300	+/- 25	565	515	16	26	24	460
	16	300	+/- 25	580	525	16	30	27	460
	25	300	+/- 25	620	550	16	36	33	500
450	10	300	+/- 25	615	565	20	26	24	460
	16	300	+/- 25	640	585	20	30	27	460
	25	300	+/- 25	670	600	20	36	33	500
500	10	300	+/- 25	670	620	20	26	24	460
	16	300	+/- 25	715	650	20	33	30	460
	25	320	+/- 25	730	660	20	36	33	500
600	10	320	+/- 25	780	725	20	30	27	480
	16	320	+/- 25	840	770	20	36	33	520
	25	340	+/- 25	845	770	20	39	36	540
700	10	320	+/- 25	895	840	24	30	27	480
	16	320	+/- 25	910	840	24	36	33	520
	25	380	+/- 25	960	875	24	42	39	580
800	10	340	+/- 25	1015	950	24	33	30	520
	16	340	+/- 25	1025	950	24	39	36	540
	25	380	+/- 25	1085	990	24	48	45	620
900	10	340	+/- 25	1115	1050	28	33	30	520
	16	340	+/- 25	1125	1050	28	39	36	540
	25	380	+/- 25	1185	1090	28	48	45	620
1000	10	360	+/- 25	1230	1160	28	36	33	550
	16	360	+/- 25	1255	1170	28	42	39	580
	25	400	+/- 25	1320	1210	28	56	52	660
1100	10	360	+/- 25	1340	1270	32	36	33	550
	16	360	+/- 25	1355	1270	32	42	39	580
	10	360	+/- 25	1455	1380	32	39	36	580
1200	16	380	+/- 25	1485	1390	32	48	45	620
	25	450	+/- 25	1530	1420	32	56	52	750
	10	380	+/- 25	1575	1490	32	42	39	620
1300	16	380	+/- 25	1585	1490	32	48	45	620
	10	380	+/- 25	1675	1590	36	42	39	600
1400	16	380	+/- 25	1685	1590	36	48	45	630
	10	400	+/- 25	1785	1700	36	42	39	620
1600	10	400	+/- 25	1915	1820	40	48	45	630