

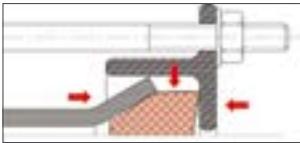
HEGAWA FittoSize

COUPLINGS, FLANGE ADAPTORS AND REDUCING COUPLING

Application

Hegawa straight fit to size couplings, flange adaptors and reducing couplings are manufactured to join most types of plain ended rigid pipes or to join a plain ended pipe to a flanged fitting, pipe or valve.

Working pressures may vary from 10 to 40 bar, depending on application. Flanges can be drilled to suit various international standards like ISO, DIN, BS and ANSI. Available from DN 50 to DN 2500 mm.



A set of trackhead bolts are tightened moving the end-rings towards each other, compressing the wedge-shaped rubber gaskets in the space formed by the end-ring, the flared middlering and the pipe surface forming a long-term leak-proof seal. To assure long term sealing without any additional maintenance after the initial installation, the design of the components is of extreme importance.

The most important component of the coupling is the rubber gasket. The material compound must be capable of retaining ultrahigh loading, extreme temperature variations, vibration, impact and flexing that can be caused by many variables in the pipeline system.

The Hegawa gasket compound uniquely developed and engineered to resist all these conditions, when confined in properly designed metal components, guarantees long term performance on many type of sources, including natural gas, oil and under many extreme conditions.

Hegawa couplings are approved by German Lloyd's (GL), DNV and American Bureau of Shipping (ABS).



Advantages

- The flexibility of the coupling easily absorbs an axial expansion or contraction of max. 10 mm. Flange adaptors can absorb an axial expansion or contraction of max. 5 mm.
- Maximum deflection of 6°.
- The couplings and flange adaptors can absorb vibrations.
- Long radius curves or slight bends can be laid without special bends.
- Accommodates deflection before, during or after installation and service.
- Accepts some disalignment in straight pipes.
- Easy installation, all you need is a spanner.
- A (removable) locating plug can be installed on request.

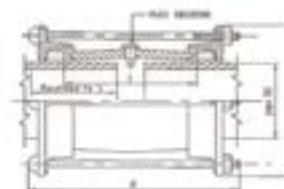
Please contact us for more technical information, installation instructions or technical drawings.

Material specifications

- High quality rolled steel to BS4360:1986 Grade 43A.
- Fusion bonded epoxy coating, thickness approx. 200 microns.
- A hot dipped galvanized coating or a transit primer is available on request.
- EPDM or NBR rubber gaskets.
- Bolts and nuts are made of steel BS970: Part1:1983 Grade 070 and are hot dipped galvanized.

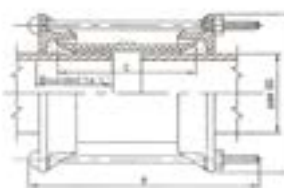
HEGAWA

FITTO SIZE COUPLINGS AND FLANGE ADAPTORS FOR THE SHIPBUILDING INDUSTRY (GALVANIZED)



Pipe Couplings

DN mm	Pipe o.d. in mm	Tol. On o.d. for length L in mm	L mm	A mm	B mm	Sleeve C x av. Thickness in mm	Bolts & nuts Qty. x dia. x length	Weight kg	WP bar
50	60,3	+/- 0,8	100	89	147	80 x 4,8	2 x M12 x 140 mm	2,5	46
65	76,1	+/- 0,8	100	155	172	100 x 6,0	2 x M12 x 165 mm	2,6	46
80	88,9	+/- 0,8	100	153	172	100 x 7,1	3 x M12 x 165 mm	3,2	46
100	114,3	+/- 0,8	100	178	172	100 x 7,1	3 x M12 x 165 mm	3,3	46



Pipe Couplings

DN mm	Pipe o.d. in mm	Tol. On o.d. for length L in mm	L mm	A mm	B mm	Sleeve C x av. Thickness in mm	Bolts & nuts Qty. x dia. x length	Weight kg	WP bar
125	139,7	+ 1,6 - 0,8	100	228	175	100 x 6	4 x M12 x 165 mm	4,8	46
150	168,3	+ 1,6 - 0,8	100	256	175	100 x 6	4 x M12 x 165 mm	8,6	37
200	219,1	+ 1,6 - 0,8	100	313	175	100 x 6	6 x M12 x 165 mm	10,9	36
250	273,1	+ 1,6 - 0,8	100	370	175	100 x 6	6 x M12 x 165 mm	13,3	35
300	323,9	+ 1,6 - 0,8	100	421	175	100 x 6	6 x M12 x 165 mm	15,3	35
350	355,6	+ 2,4 - 0,8	150	452	239	150 x 6	6 x M12 x 165 mm	18	26
400	406,4	+/- 1,6	150	503	239	150 x 6	8 x M12 x 230 mm	20	26
450	457,2	+/- 1,6	150	554	239	150 x 6	8 x M12 x 230 mm	24	26
500	508	+/- 1,6	150	605	239	150 x 6	10 x M12 x 230 mm	25	26
550	558,8	+/- 1,6	150	655	239	150 x 6	10 x M12 x 230 mm	30	26
600	609,6	+/- 1,6	150	707	239	150 x 6	10 x M12 x 230 mm	32	24
650	660,4	+/- 1,6	150	757	239	150 x 6	12 x M12 x 230 mm	42	24
700	711,2	+/- 1,6	150	812	240	150 x 6	14 x M12 x 230 mm	47	24
800	812,8	+/- 1,6	150	914	240	150 x 6	14 x M12 x 230 mm	53	20
900	914,4	+/- 1,6	150	1015	265	150 x 6	16 x M12 x 230 mm	56	20
1000	1016	+/- 1,6	150	1117	265	150 x 6	18 x M12 x 230 mm	71	16
1200	1219,2	+/- 1,6	150	1346	265	150 x 6	22 x M12 x 230 mm	118	16

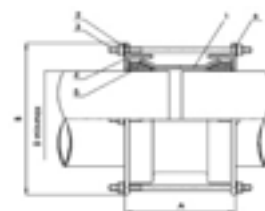
HEGAWA

FITTSIZE COUPLINGS AND FLANGE ADAPTORS FOR WATER AND GAS SERVICE (EPOXY COATED)



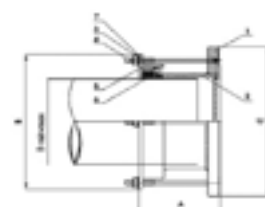
Pipe Couplings

DN mm	Pipe o.d. in mm	Tol. On o.d. for length L in mm	A mm	B mm	Weight kg
350	355,6	+ 7,0 - 7,0	220	470	25
350	378	+ 7,0 - 7,0	220	494	27
400	406,4	+ 7,0 - 7,0	220	522	28
400	429	+ 7,0 - 7,0	220	545	30
450	480	+ 7,0 - 7,0	220	596	33
500	508	+ 7,0 - 7,0	220	620	36
500	532	+ 7,0 - 7,0	220	648	38
550	558,8	+ 7,0 - 7,0	220	672	40
600	609,6	+ 7,0 - 7,0	220	722	43
600	635	+ 7,0 - 7,0	220	750	45
650	660	+ 7,0 - 7,0	220	775	45



Flange Adaptors

DN mm	Pipe o.d. in mm	Tol. On o.d. for length L in mm	A mm	B mm	C mm	Weight kg
350	355,6	+ 7,0 - 7,0	220	470	505	34
350	378	+ 7,0 - 7,0	220	494	505	36
400	406,4	+ 7,0 - 7,0	220	522	565	40
400	429	+ 7,0 - 7,0	220	545	565	42
450	480	+ 7,0 - 7,0	220	596	610	49
500	508	+ 7,0 - 7,0	220	620	670	54
500	532	+ 7,0 - 7,0	220	648	670	59
600	609,6	+ 7,0 - 7,0	220	722	780	67
600	635	+ 7,0 - 7,0	220	750	780	70
700	711,2	+ 7,0 - 7,0	220	825	895	91



DN mm	Pipe o.d. in mm	Tol. On o.d. for length L in mm	A mm	B mm	Weight kg
700	711,2	+ 7,0 - 7,0	220	825	52
700	738	+ 7,0 - 7,0	220	854	54
800	812,8	+ 7,0 - 7,0	220	925	65
800	842	+ 7,0 - 7,0	220	958	67
900	914,4	+ 7,0 - 7,0	220	1030	80
900	945	+ 7,0 - 7,0	220	1060	82
1000	1016	+ 7,0 - 7,0	220	1130	94
1000	1048	+ 7,0 - 7,0	220	1160	96
1200	1220	+ 7,0 - 7,0	320	1230	112
1200	1255	+ 7,0 - 7,0	320	1260	114

DN mm	Pipe o.d. in mm	Tol. On o.d. for length L in mm	A mm	B mm	C mm	Weight kg
700	732	+ 7,0 - 7,0	220	854	895	92
800	812,8	+ 7,0 - 7,0	220	925	1015	108
800	842	+ 7,0 - 7,0	220	958	1015	101
900	914,4	+ 7,0 - 7,0	220	1030	1115	124
900	945	+ 7,0 - 7,0	220	1060	1115	135
1000	1016	+ 7,0 - 7,0	220	1130	1230	148
1000	1048	+ 7,0 - 7,0	220	1160	1230	135
1200	1220	+ 7,0 - 7,0	320	1230	1330	178
1200	1255	+ 7,0 - 7,0	320	1260	1330	163